

# RUSTY GATE MOUNTAIN RETREAT HIKING TRAILS

### TRAIL SIGNS

#### INFORMATION SIGN

VANTAGE POINT TRAIL

1.4km 85m

PROFILE

0km 1.3km 2.7km

#### DIRECTION SIGN

WATERFALL TRAIL

- THE NAME OF THE TRAIL IS AT THE TOP OF EACH INDIVIDUAL SIGN
- THE ARROW COLOUR INDICATES THE TRAILS TECHNICALITY
- THE PROFILE MAP INDICATES THE DISTANCE COVERED IN "GREEN"

### KEY

- Information Sign
- Distance to Trail Head
- Total Ascent Remaining
- Point Of Interest
- Route Combination 12kms

### GRADING

- Easiest
- Easy
- More Difficult
- Very Difficult
- Extremely Difficult

### PROFILES

TWIN RIVERS TRAIL  
DISTANCE 1.7KM - ELEVATION 47M

VANTAGE POINT TRAIL  
DISTANCE 2.7KM - ELEVATION 108M

ROCK POOLS TRAIL  
DISTANCE 1.4KM - ELEVATION 90M

CREST TRAIL  
DISTANCE 6KM - ELEVATION 323M

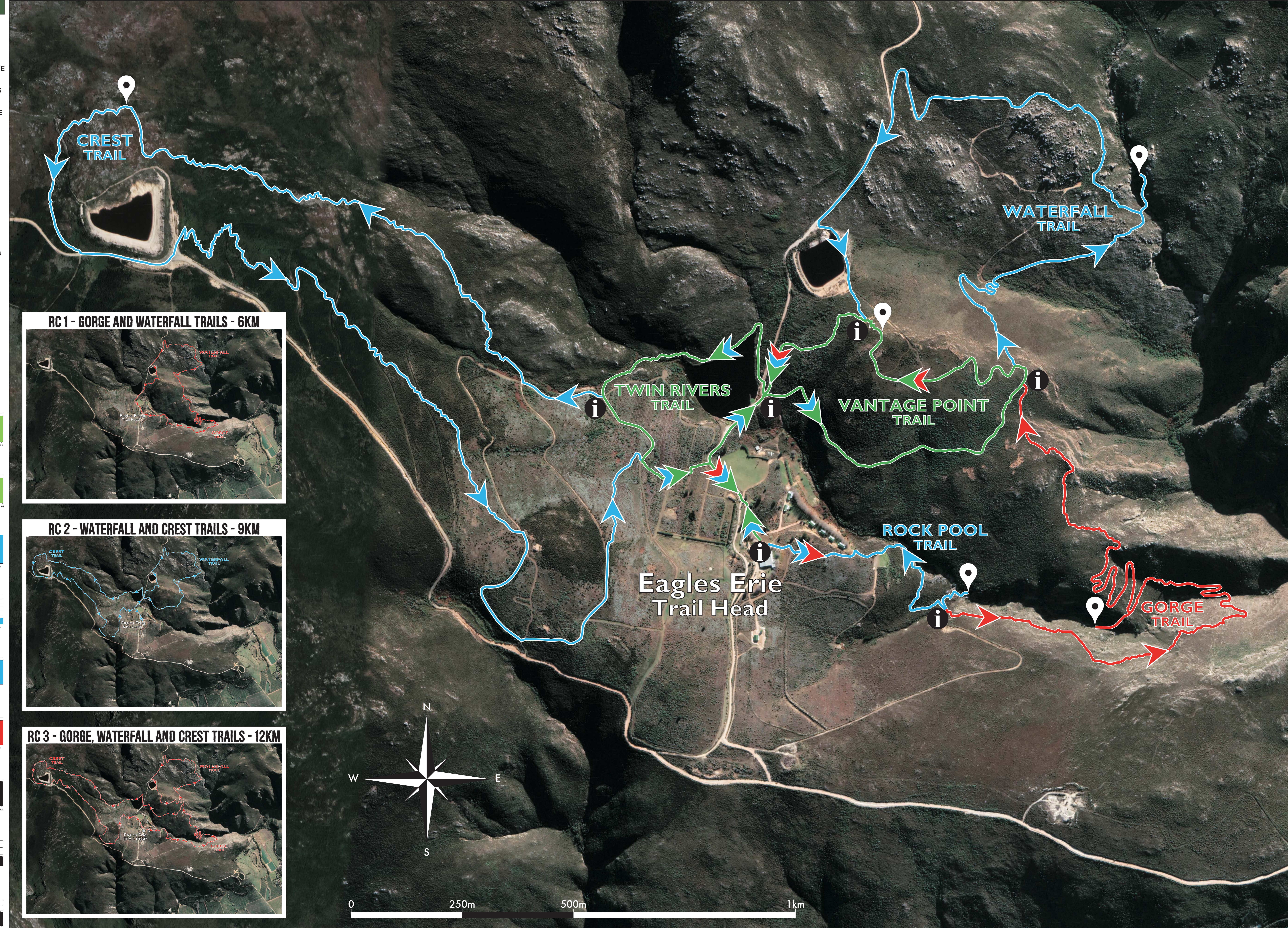
WATERFALL TRAIL  
DISTANCE 4.6KM - ELEVATION 200M

GORGETRAIL  
DISTANCE 4.3KM - ELEVATION 289M

RC1 GORGE-WATERFALL  
DISTANCE 6KM - ELEVATION 370M

RC2 WATERFALL-CREST  
DISTANCE 9KM - ELEVATION 490M

RC3 GORGE-WATERFALL-VANTAGE-CREST  
DISTANCE 12KM - ELEVATION 700M



#### RC 1 - GORGE AND WATERFALL TRAILS - 6KM

#### RC 2 - WATERFALL AND CREST TRAILS - 9KM

#### RC 3 - GORGE, WATERFALL AND CREST TRAILS - 12KM